

# 产品规格书

Product specification

3D 矩阵灯

3D Matrix Light

晨亮光电

CLEN

3D 矩阵灯

3D Matrix Light

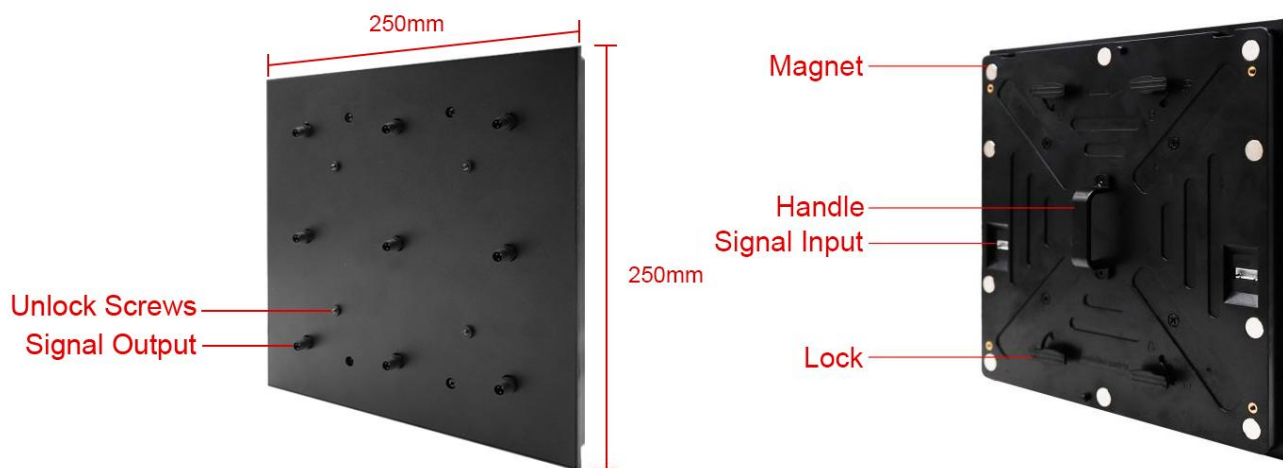


**Product name: 3D Matrix Light**

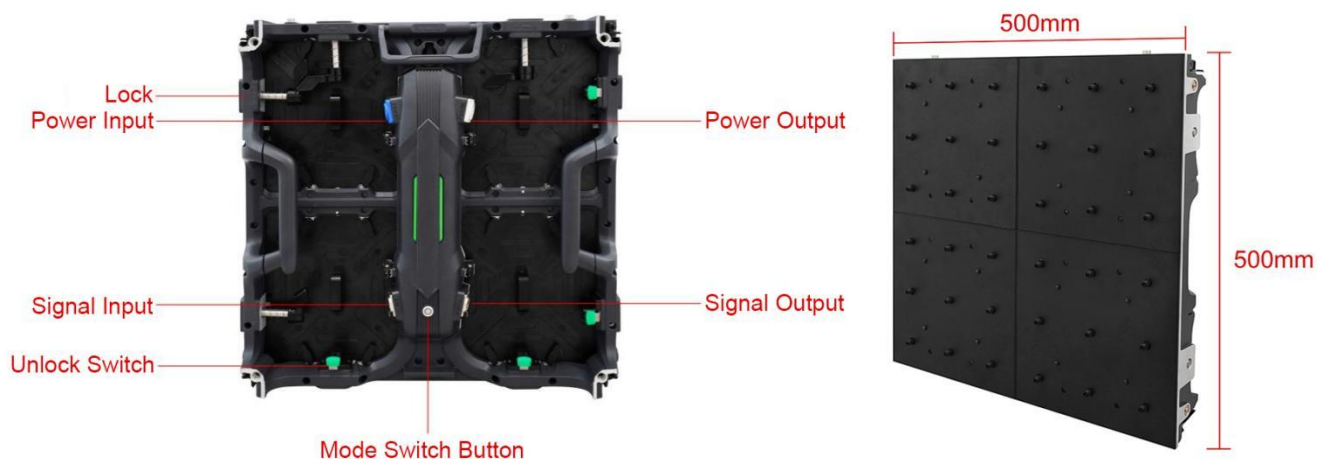
**Product mode: CL-3DP83-3M**

**Overview:** 3D matrix light is a very distinctive decorative product. It adopts centralized control of the cabinet, and the cabinet has a built-in Art-Net controller, which can easily adjust the lighting effect according to different needs and is easy to operate. In terms of installation, the cabinet has obvious advantages, and the installation is convenient and simple, which greatly improves the installation efficiency. It adopts LED chips, which have high brightness and long life, saving maintenance costs; it is widely used in commercial places, office places, hotels, exhibition halls and other places.

**Product picture:**



Each cabinet can be installed with 4pcs module





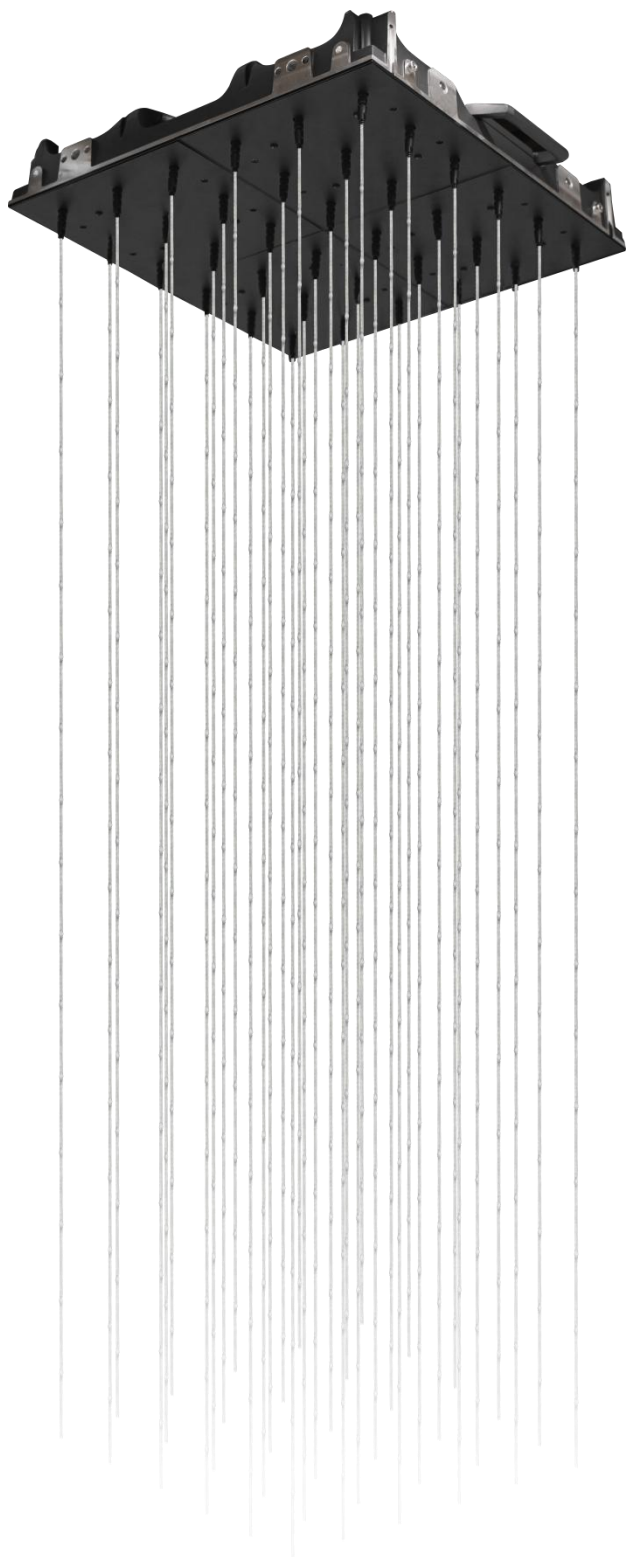


**CLEN LED**  
[www.clenled.com](http://www.clenled.com)

深圳市晨亮光电科技有限公司

Shenzhen Clen Optoelectronics Co., Ltd

Suspension installation diagram:





## ◆ Product features

- AC110-220V wide voltage power supply, Art-Net signal input;
- Built-in controller design, simple and convenient control;
- Art-Net signal control, can be cascaded for multiple use;
- Each box supports 36 pcs leather wire lights, 1296 pixels (3m length), and supports customization;
- The maximum of cabinet which can be cascaded is 254pcs;
- Magnet + lock double installation protection, more stable structure;
- Cabinet installation, better area coverage effect;
- Can be used with ARTNET protocol software (MAD-SHOW, MADRIX), support offline use;
- Support remote program upgrade;

## ◆ Parameter list

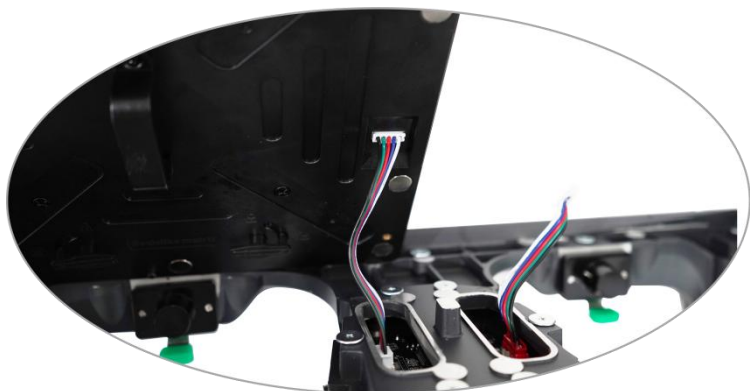
Parameter	Unit	Min	Typical	Max
Working voltage(AC)	V	110	—	220
Box Matrix power	W	—	135	—
Box Matrix Pixel	PCS	—	X:6 Y:36 Z:6 (Supports Customization)	—
Pixel Spacing	MM	—	83.3	—
LED Service Life	H	—	50000	—
Grey scale	—	—	256	—
Number of Cascade Units	PCS	—	—	254
Control Mode	—	—	Art-Net/SD Card	—
Channel	—	—	RGB	—
Product Weight	KG	—	9	—
Product Color	—	—	Black and transparent	—



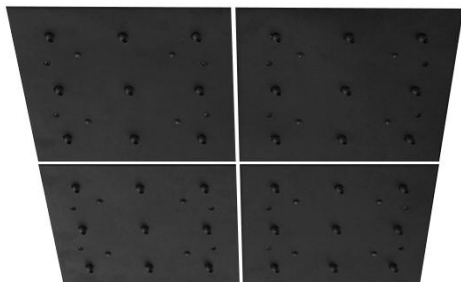
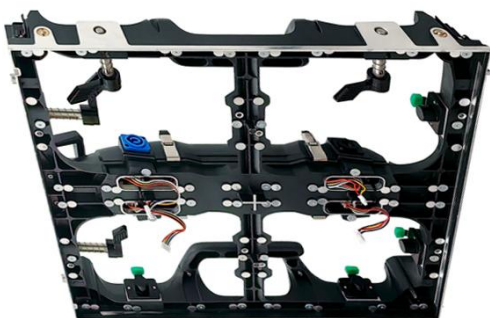
## ◆ Cabinet installation

**The module has a magnetic connection + lock to double fix the box**

Connect the box signal output port and the module signal input port;



The back of the module is fixed magnetically close to the cabinet;







Follow the instructions on the cabinet icon and turn the lock on the back of the module to complete the fixed installation;



### Front installation and unlocking action module

You can install and unlock the module by following the icon prompts through the above lock, or you can install and unlock it by pressing and rotating the screw control lock on the front of the module;

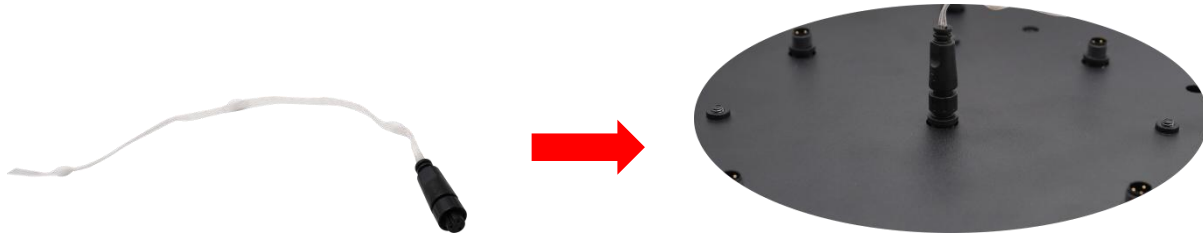


After pressing the screw, turn it clockwise to lock and counterclockwise to unlock;

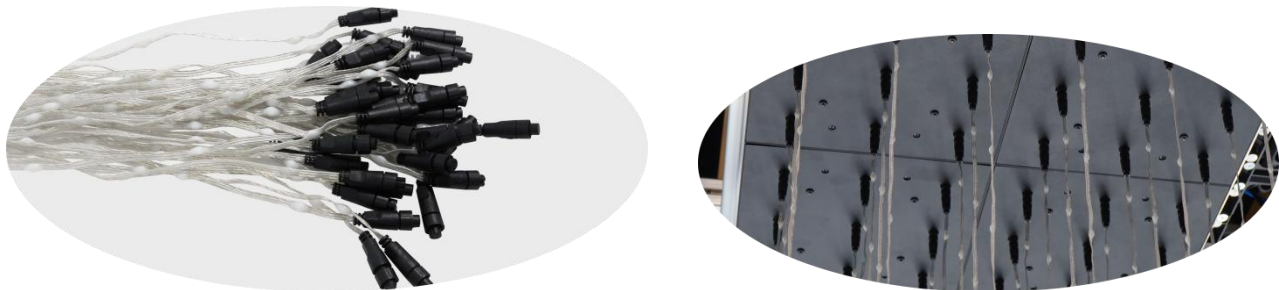


## ◆ Installation of leather wire light

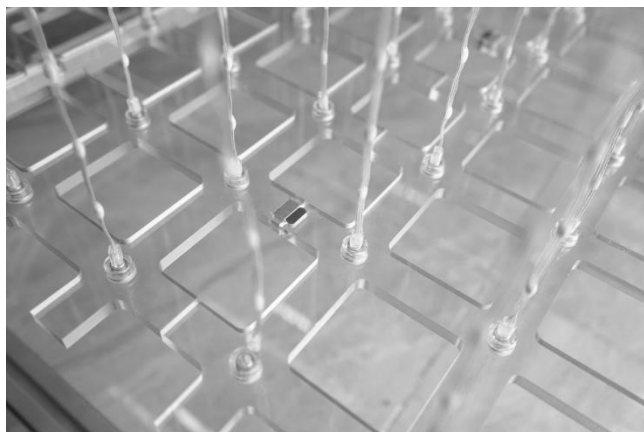
Plug the male and female ends of the leather wire light into each other (insert according to the notch indicated by the arrow on the leather wire light), and tighten the lock to prevent it from falling off;



Plug the leather wire lights one by one



Install a fixed base at the bottom of the string lamp to fix the string lamp;





**CLEN LED**  
[www.clenled.com](http://www.clenled.com)

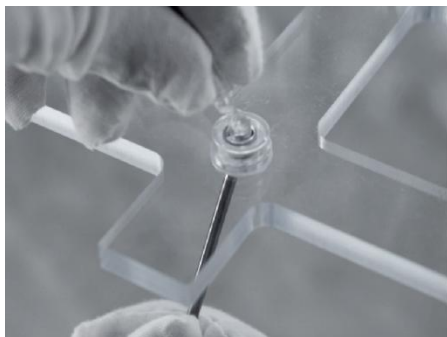
深圳市晨亮光电科技有限公司

Shenzhen Clen Optoelectronics Co., Ltd

Disassembly, Tilt the string up and pull it out  
light string



Install, Push out the base buckle and plug in the



The bottom plate can be replaced with a crystal ball according to the customer's needs



The four corners of the box are equipped with Velcro stickers, which can be fixed with the base to effectively fix items and prevent them from shifting or falling off

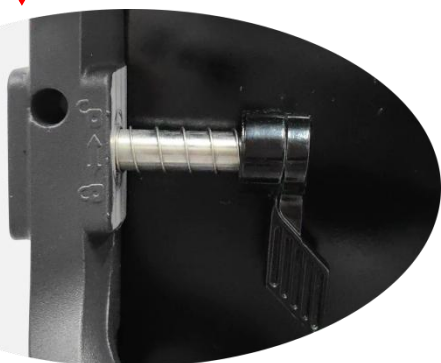


The string of lights is tied with a Velcro tape every meter, which is convenient for the string of lights to be stored, and the Velcro surface is relatively soft to reduce the damage of the string of lights





## ◆ Cabinet connection



After aligning the cabinet, press the lock into the cabinet according to the direction indicated by the lock and turn the lock to lock it;



Press the green unlocking switch to open the lock;



## ◆ Cabinet wiring



Power cable cascade: connect the output of the previous cabinet with the input of the next cabinet to complete the power cascade (The maximum of cabinet power cable can cascade is 12 cabinets)



Network cable cascade: The signal output of the previous cabinet is connected to the signal input of the next cabinet to complete the signal cascade;



Signal input



Signal input

**Note: The left side of the cabinet is the signal input port, and the right side is the signal output port. Please connect them correctly.**



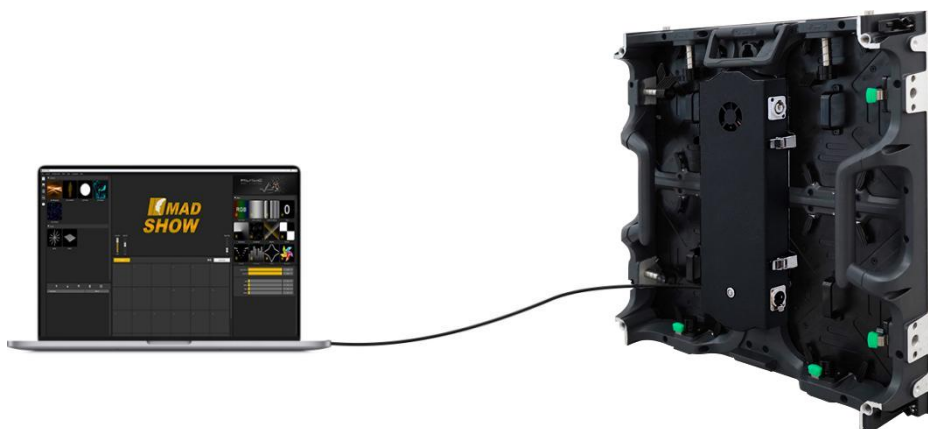
**CLEN LED**  
[www.clenled.com](http://www.clenled.com)

深圳市晨亮光电科技有限公司

Shenzhen Clen Optoelectronics Co., Ltd

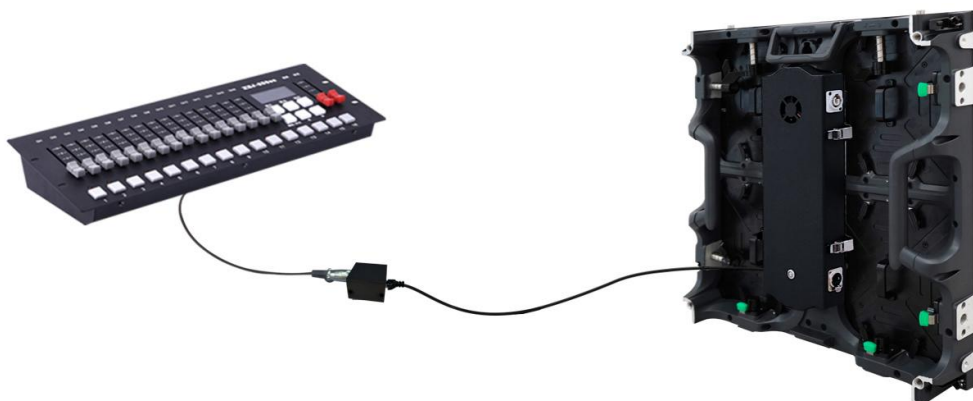
## ◆ Connecting 3D matrix lights

The cabinet has a built-in controller; Connect the network cable with the cabinet signal input port;



## SD card mode connection matrix light

Connect the control panel to the box through a signal conversion board







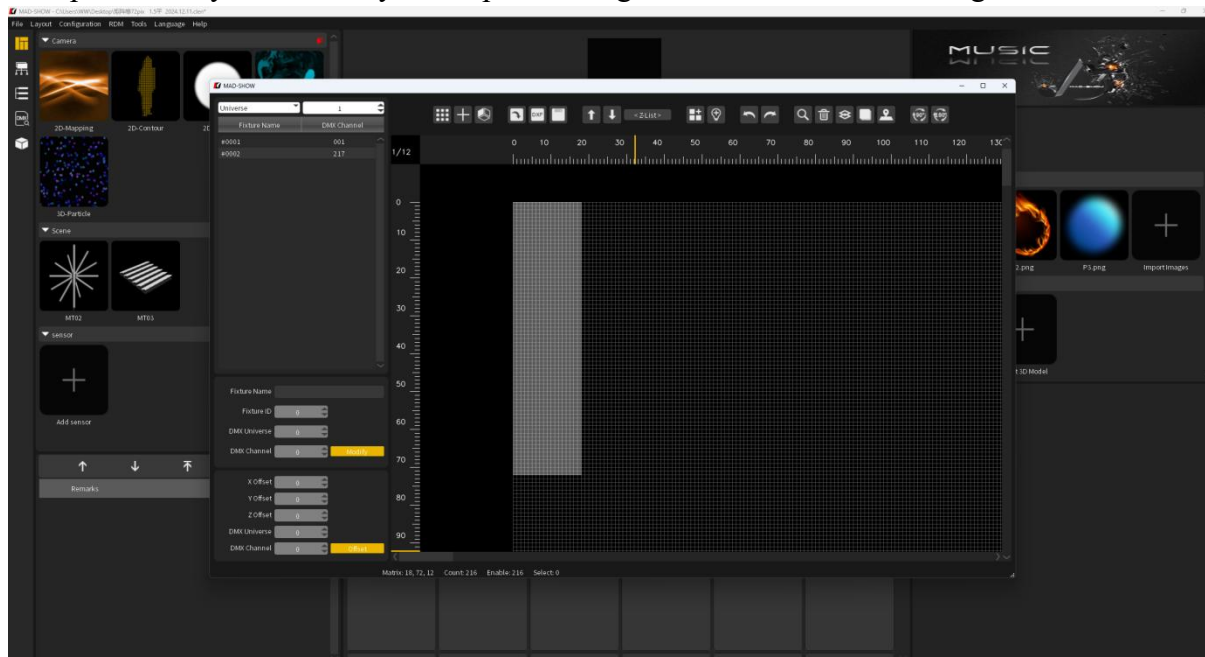
## ◆ 3D Model Import

The 3D model import function can realize 3D stereoscopic model imaging with the LED matrix lights. Connect the matrix light with MAD-SHOW, import the .fbx or .obj model into MAD-SHOW, The matrix light has built-in Artnet controller. MAD-SHOW outputs Artnet signals to the controller and transmits them to the matrix light to form the 3D model imaging;

Connect the matrix light with MAD-SHOW

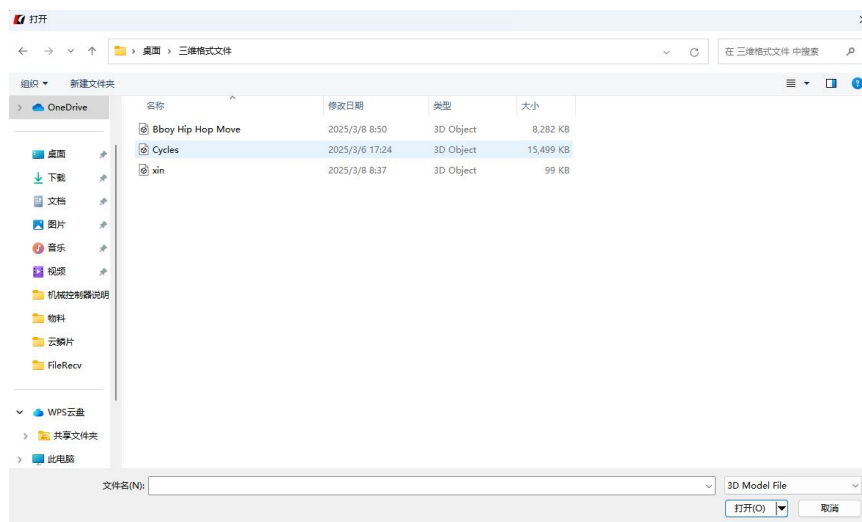


Complete the layout in the layout map according to the number of matrix lights

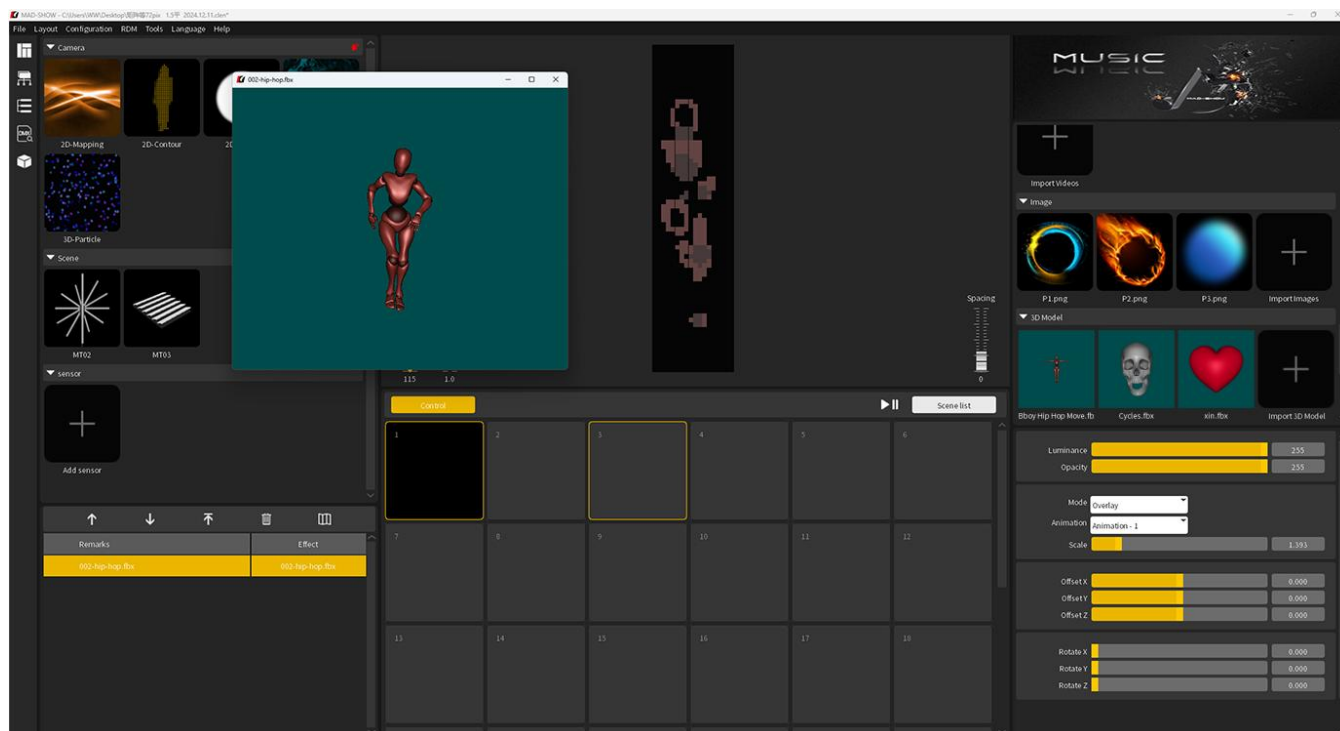




Click the Import button in the Effect column and select the 3D format file. The file name cannot be in Chinese.



Drag the 3D special effects to the workspace to play them, and the small window will display the model special effects;



Support impor formats like FBX, OBJ and so on;



◆DMX Channel list

Channel	Name	Figure	Instructions
1	Mode selection	000-247	Call internal 31 effects (one effect for every 8 addresses, and 0-7 for SD card effect 1)
		248-255	Switch to ART_NET mode
2	Speed	000-255	0 is the slowest speed, 255 is the fastest speed, SD card mode is valid
3	Brightness	000-255	0 is the brightness off, 255 is the brightest, SD card mode is valid
4	R- mask	000-255	Subtract red from the effect. 000 is the original effect, and 255 means subtract all red from the effect
5	G-mask	000-255	Subtract green from the effect. 000 is the original effect, and 255 is subtracting all green from the effect
6	B-mask	000-255	Subtract the blue in the effect. 000 is the original effect. 255 means subtract all the blue in the effect
7	invalid	000-007	
	Normally on	008-015	Constant bright white, color selection by mask (brightness, mask channel available)
	stroboscopic	016-255	The higher the value, the faster the strobe (speed, brightness, mask channel is effective)
8	invalid	000-200	
	Record	201-255	When the value of channel 4.5.6 is 255, the recording is valid and the ART_NET effect is recorded to the file specified by channel 1





## ◆ Button Operation Instructions

Mode switch	Long press the button for 3S-8S (release the button after it flashes to complete the mode switch. Currently, there are two modes: Art-Net and SD card.
SD card mode	In SD card mode, click the button to switch the built-in effects of the controller.
Automatic coding	Double click the button to complete automatic code writing
Upgrade mode	Press and hold the button to power on. Release the button after the button light comes on. When the green signal light flashes, the upgrade starts. When the flashing stops, the upgrade is complete.
Factory restore	Long press the button for 10S (release the button after the button light goes out to complete the factory reset)

## ◆ Product packaging





◆ **Notes:**

1. Pay attention to the use environment and make sure it is waterproof and moisture-proof;
2. There is high voltage inside the cabinet. Non-professionals must not disassemble the machine, otherwise the consequences will be at your own risk;
3. The network cable interface cannot be connected to a POE switch or a gigabit switch, otherwise it will cause damage to the network cable port;
4. The company does not provide warranty for man-made damage and natural damage;
5. If you find any abnormality during use, please contact the manufacturer in time;